

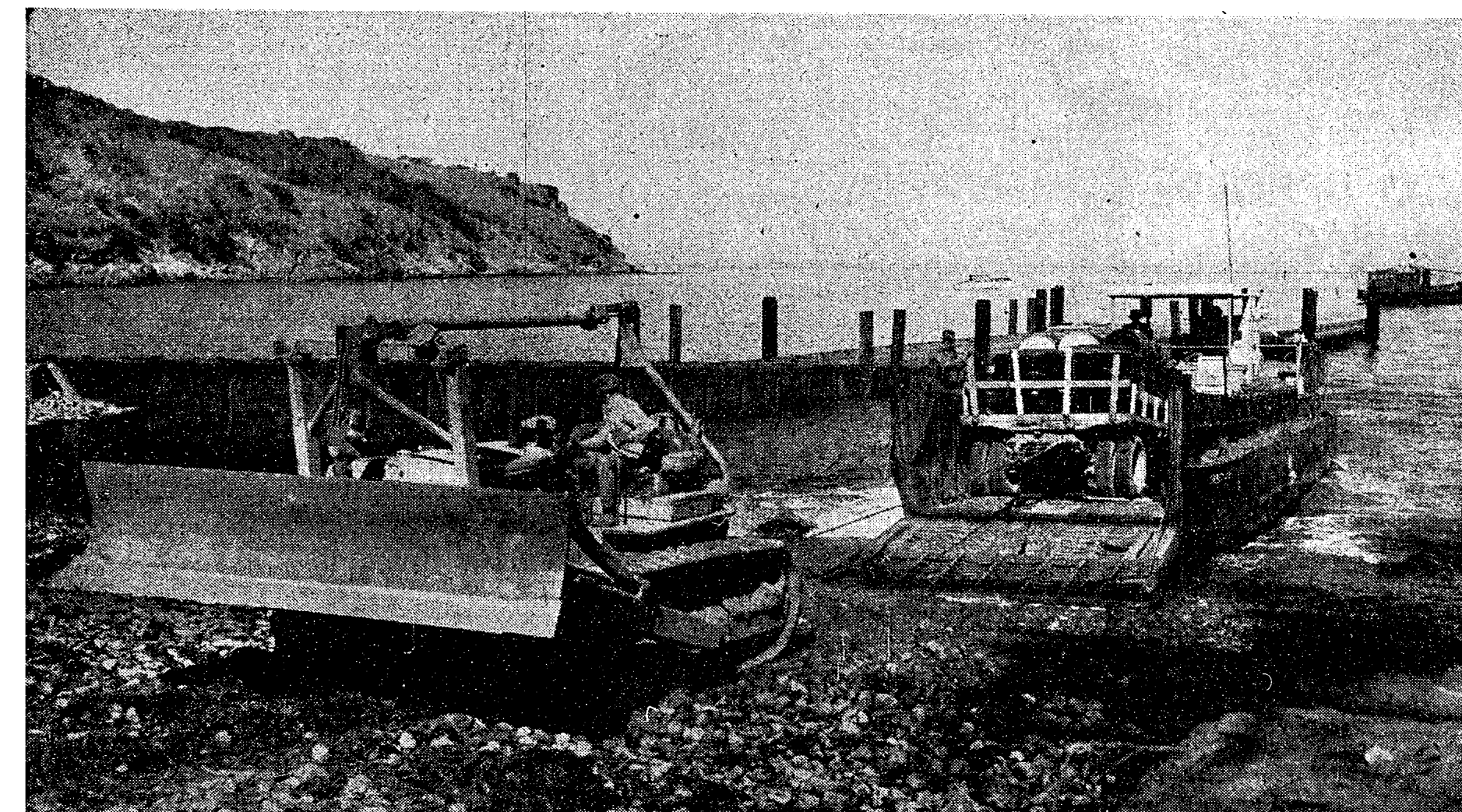
**KEEP OUT**—Santa Cruz Island off the Southern California coast, where Navy is building a permanent radar station which, among other things, will track the course of missiles fired from Pt. Mugu, 26 miles away, and record the information they telemeter back. At left, old radar shack; center, generator building; right, construction crew headquarters; rear, radar receiving station. The new Navy barracks building is out of picture. See story Page 2, Part 1

station which, among other things, will track the course of missiles fired from Pt. Mugu, 26 miles away, and

record the information they telemeter back. At left, old radar shack; center, generator building; right, con-

struction crew headquarters; rear, radar receiving station. The new Navy barracks building is out of picture.

# On Santa Cruz Island the Navy Plans for the Day of Push-Button Warfare



**COMING ASHORE**—"Cat" hauls trailer full of oil drums for road surfacing from landing craft beached on Santa Cruz Island. Heretofore

the Navy has had only small temporary stations on this island and others in Santa Barbara Channel. This is first major installation of its kind.



**'BURMA ROAD'**—Part of the tortuous roadway cut from harbor to radar station. Six miles long, 25% of it was blasted through hillsides.



**BIG JOB**—Edward R. Siple, the contractor, had to rebuild a pier and make island suitable for arrival of big equipment before starting the real work. Here he talks with R. P. Craine, ranch employee who has lived on Santa Cruz Island for 19 years.



**COME AND GET IT**—Cook of the outfit is Joe Wade, who turns out vittles that would make a Los Angeles hotel chef's eyes pop open. "Never et better," say tanned men. Times photos by Gordon Wallace